



REC# #: 752634

RECORDED 5/8/2019 AT 1:09 PM BK# 2620 PG# 1676
Debra K. Lee, CLERK OF LARAMIE COUNTY, WY PAGE 1 OF 1

STATE OF WYOMING CORNER RECORD

(In compliance with the CORNER PERPETUATION AND FILING ACT, Wyoming Statutes, 1997 Section 33-29-140, et. seq., and the Rules and Regulations of the Board of Registrations for Professional Engineers and Professional Land Surveyors)

SOUTHWEST CORNER SECTION 13, T. 18 N., R. 64 W., 6TH P.M., LARAMIE COUNTY, WYOMING

GLO: SET A SANDSTONE 18X14X4, 10IN. DEEP, MARKED WITH 3 NOTCHES ON S. SIDE, AND 1 NOTCH ON E. SIDE FOR COR. TO SEC'S 13, 14, 23, 24.

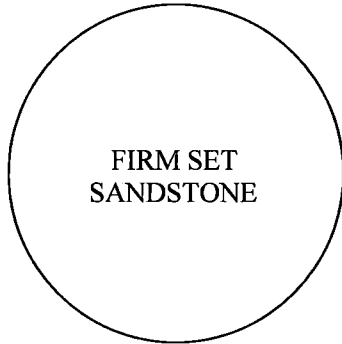
FOUND: FOUND FIRM SET SANDSTONE APROX. 18X10X7, NO MARKINGS FOUND, STONE IS SET DIRECTLY IN NORTH AND SOUTH FENCE LINE. FOUND A #4 REBAR, NO CAP, 1.1' ON WEST SIDE OF STONE.



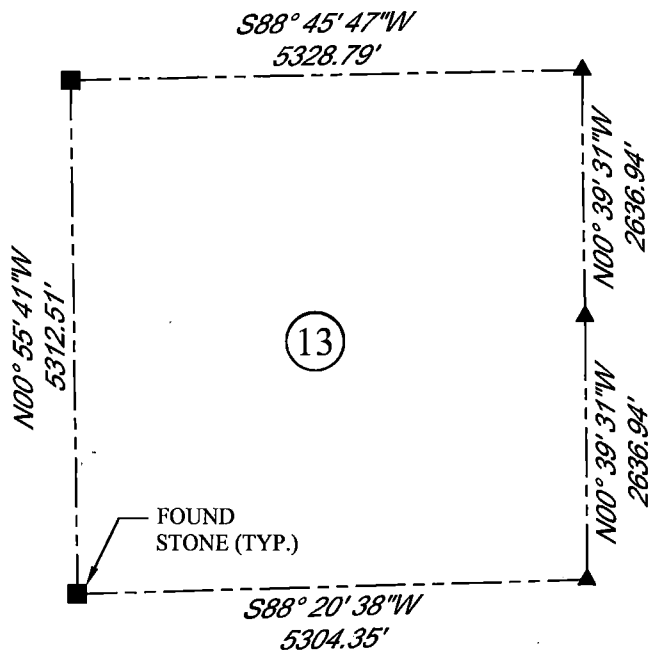
SCALE: NONE
NORTH DETERMINED BY
G.P.S OBSERVATIONS

FOUND FIRM SET SANDSTONE

SET NOTHING



FIRM SET
SANDSTONE



LEGEND:

- FOUND BLM CAP
- FOUND USFS CAP
- FOUND STONE
- FOUND PRIVATE MONUMENT
- ◆ CALCULATED POSITION
- ▲ SET MONUMENT (LS10245)
- SECTION LINE

DATE OF FIELD WORK: 8/15/2018 OFFICE REFERENCE: MERIDEN

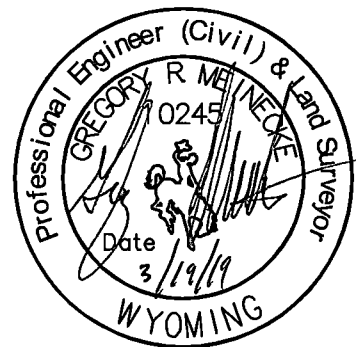
CROSS INDEX DIAGRAM

	1	2	3	4	5	6	7	8	9	10	11	12	13	14	15	16	17	18	19	20	21	22	23	24	25
A																									
B																									
C			6		5		4		3		2		1												
D																									
E																									
F																									
G			7		8		9		10		11		12												
H																									
J																									
K																									
L			18		17		16		15		14		13												
M																									
N																									
O																									
P			19		20		21		22		23		24												
Q																									
R																									
S																									
T			30		29		28		27		26		25												
U																									
V																									
W																									
X			31		32		33		34		35		36												
Y																									
Z																									

WOOD
2615 AVIATION DRIVE
SHERIDAN, WY 82801
PH: 307-675-6400



THIS CORNER RECORD WAS
PREPARED BY ME OR UNDER
MY DIRECTION AND
SUPERVISION,
SEAL AND SIGNATURE



CORNER NAME: SOUTHWEST SECTION: 13 T. 18 N., R. 64 W. ; 6TH P.M. CROSS-INDEX # N-21
SBRPELS/PLSW: MARCH 1994; PLSW JANUARY 1998